

2018 Annual Report



Jefferson Rural Fire Protection District
*Jefferson * Millersburg * Talbot*



"Proudly Serving Since 1956"

Services We Provide

The Jefferson Rural Fire Protection District provides fire and emergency services for a population of approximately **9,500 people** in a rural area of the Willamette Valley. The district includes three fire stations and depends on volunteers and part-time ambulance crews to respond on emergency calls.

The Jefferson Rural Fire Protection District was formed in 1956 and the district covers approximately **97 square miles** that includes the City of Jefferson, rural areas of Millersburg, Talbot, and Ambulance Service Area (ASA), which includes five square miles in the Scio Fire District area. The district covers a total of 31 miles of river which includes the North and South forks of the Santiam River, and the Willamette River. There are two railroad systems and approximately 10 miles of Interstate 5. The district lay of the land is diverse in the sense that there are rural areas in Jefferson. Many houses and subdivisions located in the more rural areas are nestled in heavily wooded hillsides and steep terrain.

Emergency services provided include fire suppression, emergency medical services, ambulance transportation, water rescue, hazardous materials response, fire prevention, fire safety education, and health education on injury and illness prevention.

The Jefferson Fire District provides services beyond fire and EMS. We have a medical equipment loan program, a life jacket loan station, chimney brush loan program, monthly birthday lunch at Clover Ridge and Jefferson Elementary Schools, birthday party at the station, First Aid/CPR Instruction, Bike Helmet Program, Notary Service, Blood Pressure Checks, Fire Prevention Programs, Smoke Detector Program, Trunk and Treat, AARP Safe Driving Classes, Babysitting Class, and address signs. The Jefferson Volunteer Association has programs such as two pancake breakfasts a year, Fill the Boot (MDA), and the Holiday Food Drive (which includes the Haunted House).

There are three fire stations within the district which are located in Jefferson, Millersburg, and Talbot and are primarily staffed with volunteers. The volunteers are people of good character and are willing to go through an extensive training program in order to serve as a member of the Jefferson Fire District. People interested in volunteering should contact the Fire District office. District personnel includes the Fire Chief (part-time), Assistant Chief, Training/Maintenance Officer, Logistics Supervisor, Administrative Assistant, part-time Staff Assistant and approximately 26 volunteer firefighters, 20 volunteer EMT/EMR personnel, eight Support Team members, 16 part-time paramedics, and 11 part-time EMTs.

There are a total of four fire engines (that carry 1,000 gallons), one 3,000 gallon water tender and two 2,500 gallon multi-use tenders, two brush fire pick-ups, one light duty rescue, two ambulances, one rescue boat, one command unit, and one support unit currently in service at the three stations.

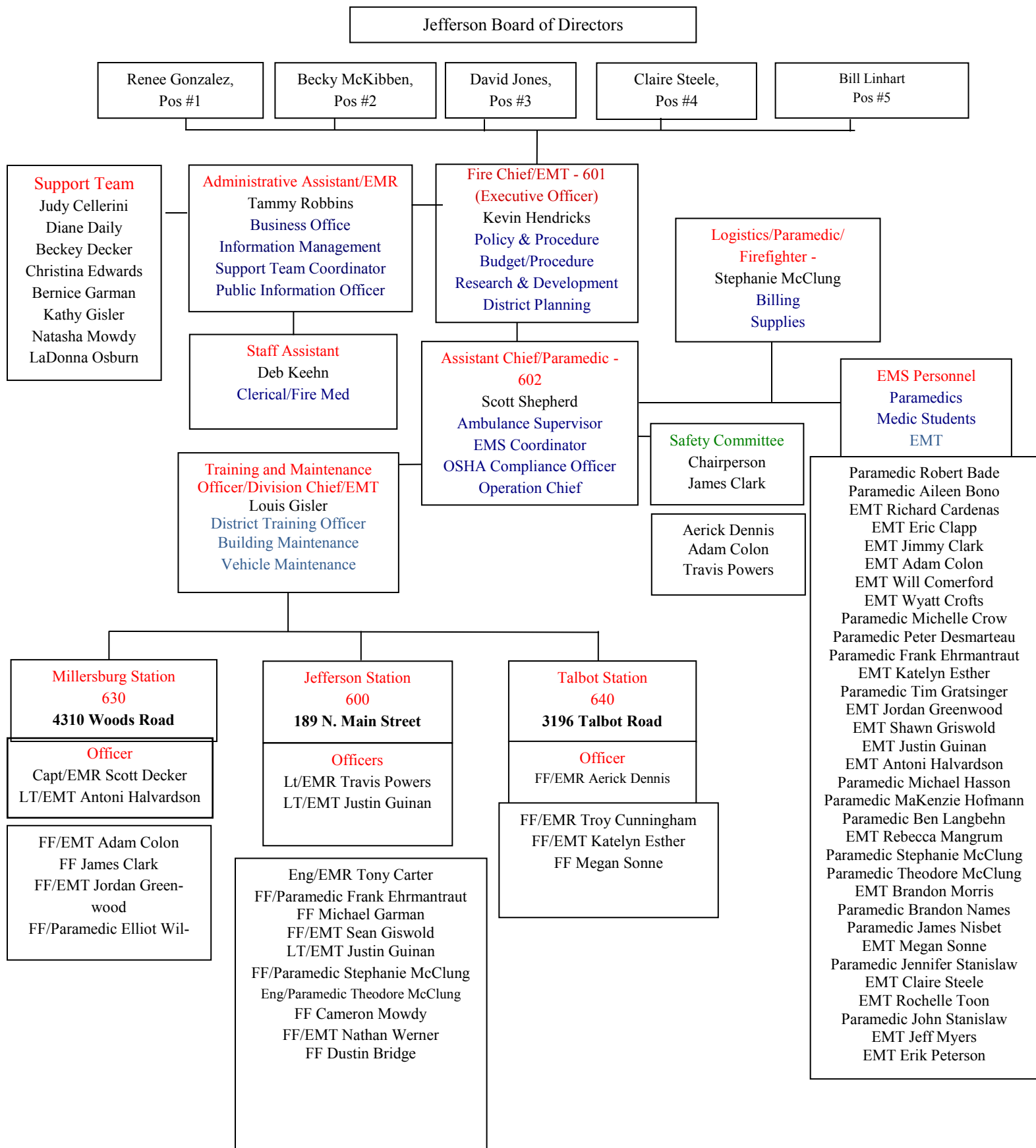
Financial Information

An annual financial audit provides the district and the public with an accounting of the Fire District's finances. The district operates on a cash basis and the audit is based on an accrual basis. We are proud to report that the audit indicated we have no instances of noncompliance. The Budget Committee Members are as follows: Bud Jones, Eileen Vetter, Roger Frank, Vince Cellerini, and Ray Edwards. The Budget Officer is Fire Chief Kevin Hendricks.

<i>Fund</i>	<i>2017-18 Budget</i>
General Fund	\$1,289,468
Ambulance Fund	\$476,008
Equipment Reserve Fund	\$323,873
Grant Fund	\$154,881
TOTAL REGULAR BUDGET	\$2,244,230

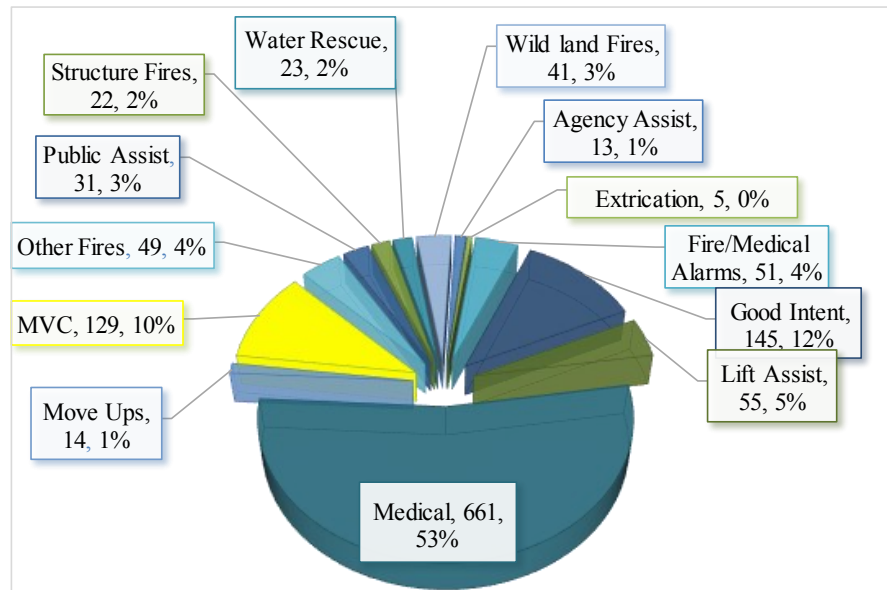
2017-2018 Assessed Value	
Marion County	\$477,508,983
Linn County	\$194,511,496
Total Property Value	\$620,020,479
<i>Permanent Tax Rate: \$1.1955 per thousand</i>	

Organizational Chart

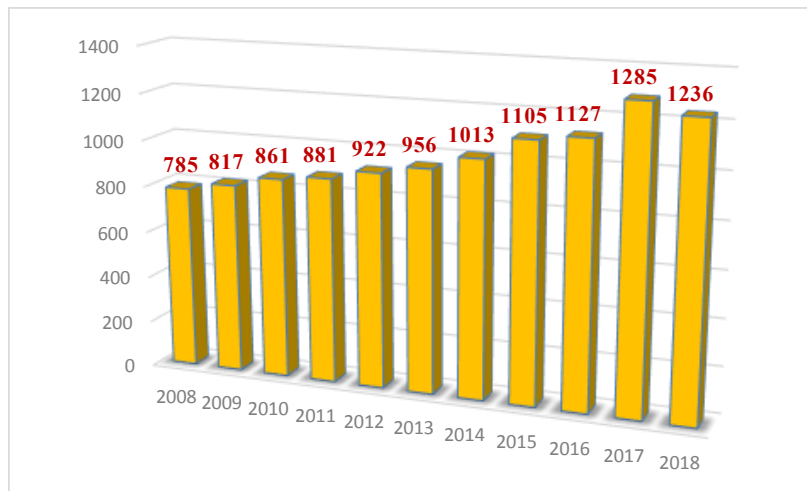


Stats

The Jefferson Fire District responded to a total of 1,239 calls for service in 2018. These consisted of fires, medical emergencies, water rescues, motor-vehicle crashes, etc. The district's population has grown, increasing our customer base.

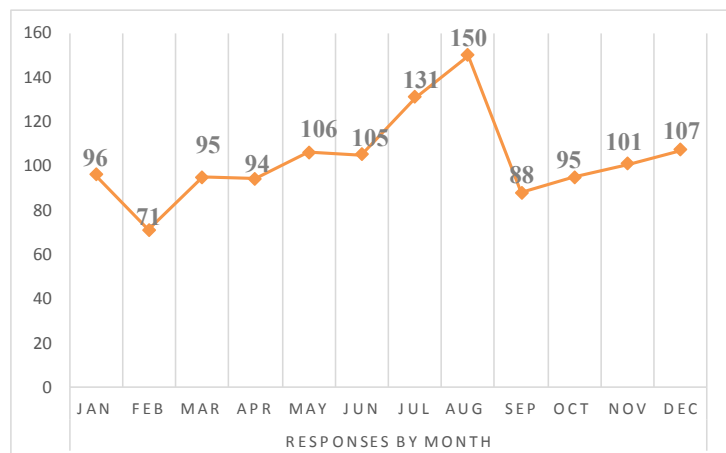


Most responses 661 (53%) are for medical emergencies. The district was called to 22 (2%) structure fires during 2018.

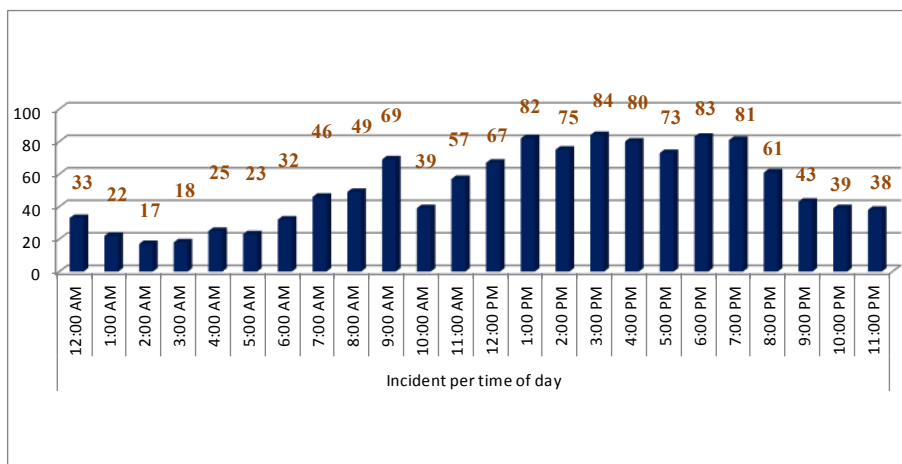


Since 2008 the district has been on a steady increase for calls for service.

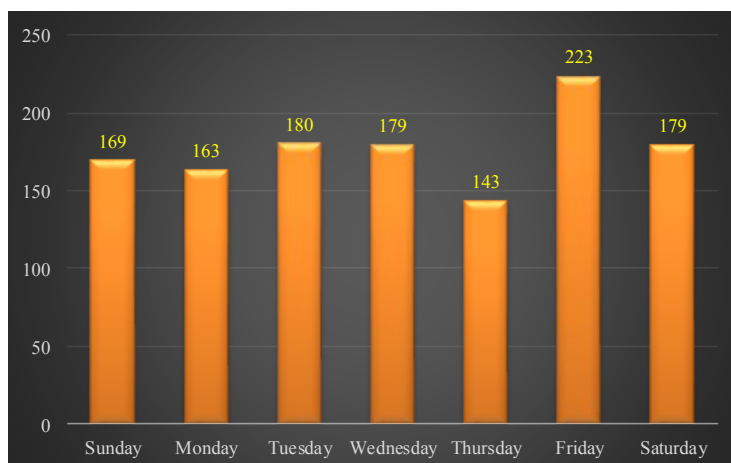
Emergency responses vary by month. Summer months are busier due to wildland fires and recreational activities. Winter months bring more incidents involving heating equipment and poor road conditions.



Stats Continued



Most emergencies occur on Tuesdays and Fridays. The busiest period of the day for emergencies is 1:00 p.m. to 7:00 p.m.



Incident Type	Jan	Feb	Mar	Apr	May	June	July	Aug	Sept	Oct	Nov	Dec	Total
111 - Building fire	1	3	3	0	2	1	1	4	2	1	3	1	22
114 - Chimney or flue fire, confined to chimney or flue	0	0	0	0	0	0	0	0	0	0	0	0	0
131 - Passenger vehicle fire	0	1	1	0	1	1	0	2	1	1	2	1	11
132 - Road freight or transport vehicle fire	0	0	0	0	0	0	0	0	1	0	0	0	1
138 - Off-road vehicle or heavy equipment fire	0	0	0	1	0	0	1	0	0	0	0	0	2
141 - Forest, woods or wildland fire	0	0	0	0	0	1	0	1	0	1	1	0	4
142 - Brush or brush and grass mixture	0	0	0	0	1	1	6	4	1	9	3	0	25
143 - Grass fire	0	0	0	0	0	1	6	2	1	0	0	0	10
150 - Outside rubbish fire, other	0	0	0	0	0	0	0	0	0	0	0	0	0
151 - Outside rubbish, trash or waste fire	0	0	0	1	0	0	1	0	0	0	0	0	2
162 - Outside equipment fire	0	0	0	0	0	0	0	0	0	0	0	0	0

Stats Continued

Incident Type	Jan	Feb	Mar	Apr	May	June	July	Aug	Sept	Oct	Nov	Dec	Total
321 - EMS call, excluding vehicle accident with injury	69	49	47	62	57	44	58	68	49	39	49	70	661
322 - Motor vehicle accident with injuries	2	2	4	3	8	11	5	7	9	5	4	1	61
323 - Motor vehicle/pedestrian accident (MV ped)	0	0	0	0	0	0	0	0	0	1	0	0	1
324 - Motor vehicle accident with no injuries.	5	2	5	2	4	11	5	12	3	6	11	6	72
341 - Search for person	0	0	0	1	1	0	0	0	0	0	0	0	2
342 - Search for person in water	1	0	0	0	0	0	2	0	0	0	0	0	3
361 - Swimming/recreational water areas rescue	0	0	0	0	1	0	1	0	0	0	0	0	2
363 - Swift water rescue	0	1	0	0	0	0	6	6	1	1	0	1	16
411 - Gasoline or other flammable liquid spill	0	0	0	0	1	0	1	0	0	0	0	0	2
412 - Gas leak (natural gas or LPG)	0	0	0	1	0	0	0	0	0	0	0	1	2
444 - Power line down	0	0	0	0	0	1	1	1	1	0	0	1	5
445 - Arcing, shorted electrical equipment	0	0	0	0	0	0	0	0	0	0	0	0	0
4611 - Downed Tree	0	1	1	0	0	0	0	2	0	0	3	0	7
531 - Smoke or odor removal	0	0	0	1	0	0	0	0	0	0	0	0	1
542 - Animal Rescue	0	0	1	0	1	1	0	0	0	0	0	0	3
552 - Police matter	1	0	2	2	4	2	1	0	1	0	0	0	13
553 - Public service	0	1	0	2	1	2	0	1	1	1	0	2	11
554 - Assist invalid	7	2	11	4	5	4	5	2	5	6	2	2	55
561 - Unauthorized burning	3	0	0	1	3	2	6	8	3	3	5	1	35
571 - Cover assignment, standby, move up	1	1	0	0	0	1	4	2	1	0	0	4	14
6112 - Dispatched and cancelled en route, EMS call	0	0	5	1	3	5	5	7	3	5	2	5	41
6113 - Dispatched and cancelled en route, EMS alarm	0	1	1	0	2	1	0	1	0	1	0	0	7
6114 - Dispatched and cancelled en route, Fire call	0	0	3	1	3	2	0	3	3	3	2	0	20
6115 - Dispatched and cancelled en route, Fire alarm	1	1	2	3	0	0	0	0	0	1	3	2	13
6116 - Dispatched and cancelled en route, MVA	0	1	1	1	2	0	3	2	0	2	0	1	13
6117 - Dispatched, unable to respond	1	0	0	1	0	1	0	2	0	0	0	0	5
622 - No incident found on arrival at dispatch address	2	1	4	2	1	5	10	7	0	3	4	5	44
631 - Authorized controlled burning	0	0	2	0	3	3	1	1	0	2	4	0	16
651 - Smoke scare, odor of smoke	0	0	0	1	0	0	0	0	0	0	0	1	2
652 - Steam, vapor, fog or dust thought to be smoke	0	0	1	0	0	0	0	2	1	0	0	0	4
745 - Alarm system activation, no fire - unintentional	2	4	1	3	2	4	2	3	1	4	3	2	31
746 - Carbon monoxide detector activation, no CO	0	0	0	0	0	0	0	0	0	0	0	0	0
813 - Wind storm, tornado/hurricane assessment	0	0	0	0	0	0	0	0	0	0	0	0	0
Monthly Total	96	71	95	94	106	105	131	150	88	95	101	107	1239
Transports	53	33	41	43	40	36	42	45	39	34	41	48	495
Scio calls	15	6	5	6	8	6	12	13	11	13	10	10	115
Scio Transports	11	5	3	3	4	2	4	5	8	4	6	6	61
Mutual Aid Given	3	5	2	4	6	3	16	8	6	4	4	7	68

2017 same
period

1285

Station Apparatus Status

Jefferson Station

Boat 60

Number of Responses	22
Average staffing per response	2.22
Average tone out to response	11.5
Average tone out to arrival	22.5
Average time unit spent on the calls	49:16



C61

Number of Responses	438
Average staffing per response	1.14
Average tone out to response	2:57
Average tone out to arrival	9:43
Average time unit spent on the calls	28:59

Engine 60 Staff with Volunteers

Number of Responses	137
Average staffing per response	2.5
Average tone out to response	6:27
Average tone out to arrival	12:34
Average time unit spent on the calls	35:02

Engine 60 Day time staff

Number of Responses	307
Average staffing per response	2.9
Average tone out to response	2:27
Average tone out to arrival	12:17
Average time unit spent on the calls	23:57



Engine 61

Number of Responses	23
Average staffing per response	2.1
Average tone out to response	4:55
Average tone out to arrival	12:08
Average time unit spent on the calls	35:22

Station Apparatus Status

Jefferson Station

Medic 60 Staffed 24/7

Number of Responses	946
Average staffing per response	2.08
Average tone out to response	2:33
Average tone out to arrival	9:55
Average time unit spent on the calls	36:45



M61 Volunteers/off duty personnel

Number of Responses	48
Average staffing per response	2.02
Average tone out to response	3:11
Average tone out to arrival	8:21
Average time unit spent on the calls	38:23



Rescue 60

Number of Responses	219
Average staffing per response	1.4
Average tone out to response	5:24
Average tone out to arrival	11:26
Average time unit spent on the calls	22:26



Support 60

Number of Responses	46
Average staffing per response	1.02
Average tone out to response	5:18
Average tone out to arrival	13:54
Average time unit spent on the calls	41:46



Tender 60

Number of Responses	41
Average staffing per response	1.14
Average tone out to response	6:50
Average tone out to arrival	16:47
Average time unit spent on the calls	42:47

Station Apparatus Status

Jefferson Station

Utility 60

Number of Responses	33
Average staffing per response	1.33
Average tone out to response	3:45
Average tone out to arrival	13:24
Average time unit spent on the calls	45:36



Millersburg Station



Brush 63

Number of Responses	525
Average staffing per response	1.52
Average tone out to response	5:49
Average tone out to arrival	15:38
Average time unit spent on the calls	29:41

Engine 63

Number of Responses	139
Average staffing per response	2.1
Average tone out to response	3:15
Average tone out to arrival	11:24
Average time unit spent on the calls	27:13



Tender 63

Number of Responses	10
Average staffing per response	1.3
Average tone out to response	7:38
Average tone out to arrival	19:47
Average time unit spent on the calls	41:30

Station Apparatus Status

Talbot Station



Brush 64

Number of Responses	347
Average staffing per response	1.81
Average tone out to response	4:53
Average tone out to arrival	13:24
Average time unit spent on the calls	22:40

Engine 64

Number of Responses	35
Average staffing per response	2.28
Average tone out to response	4:35
Average tone out to arrival	11:05
Average time unit spent on the calls	50:30



Tender 64

Number of Responses	4
Average staffing per response	1
Average tone out to response	7:50
Average tone out to arrival	21:44
Average time unit spent on the calls	17:42

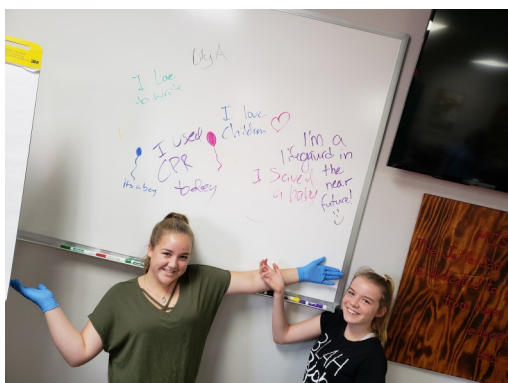
Community Service



**Clover Ridge Elementary
School Birthday Visits**



Babysitting Class



Community Service (con't)

Food Basket Program



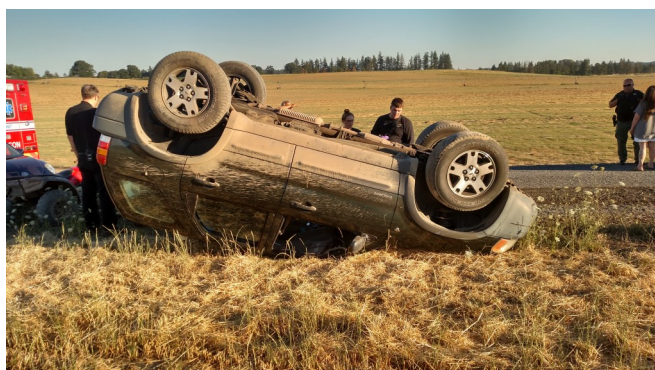
Annual Awards Banquet



Fire, Rescue, and EMS Training



Service Calls



Emergency Medical Services

The Jefferson Fire District provides medical transport services to both Linn and Marion Counties within the 97 square miles of district boundaries and about five square miles in the Scio Fire District. Assistant Chief Scott Shepherd is responsible for the financial management and managing of the ambulance service. Stephanie McClung oversees billing, equipment repair and supplies for the ambulance service and training.

The Emergency Medical Division is the busiest schedule of the district handling 60% of the incidents (including MVCs). To provide the service, the district uses one full time paramedic, as well as part time paramedics and part time EMTs to cover the first out medic unit 24 hours a day, seven days a week. The second out medic is covered by full time and volunteer paramedics and EMTs when available. The district has mutual aid agreements with neighboring ambulance services when our units are not available. Firefighters are trained to the EMR level or higher to provide care in conjunction with the medic crew or as first response when the medic unit is delayed. The medic units are also assigned to other incident types to provide manpower and/or oversee the health of the firefighters working.

There were 728 medical emergencies (including motor vehicle injury accidents) in 2018, compared to 831 medical emergencies (including motor vehicle injury accidents) in 2017. Jefferson Fire District transported 495 patients in 2018 compared to 534 patients to a hospital in 2017.



FireMed is a membership program offered by the Jefferson Fire District that provides affordable quality ambulance service. There are over 800 members currently enrolled in the FireMed program. The fees received from FireMed help provide advanced EMS training, supplies, and emergency medical equipment.

Equipment and Maintenance

<i>Apparatus</i>	<i>Year</i>	<i>Make</i>	<i>Located</i>
Command 61	2002	Chevy Suburban	Jefferson Station 600
Utility 60	1996	Dodge 4 x 4	Jefferson Station 600
Medic 60	2008	Ambulance	Jefferson Station 600
Medic 61	2004	Ambulance	Jefferson Station 600
Support 60	1991	Chevy Suburban	Jefferson Station 600
Tender 60	1992	IH H&W 3,000 Gallon Tender	Jefferson Station 600
Engine 60	2003	Pierce Saber	Jefferson Station 600
Engine 61	1991	IH Western States Pumper	Jefferson Station 600
Boat 60	2015	Rescue Boat - 21' SJX	Jefferson Station 600
Rescue 60	2001	Ford F-550	Millersburg Station 630
Engine 63	2003	Pierce Saber	Millersburg Station 630
Tender 63	1982	International 6 x 6	Millersburg Station 630
Brush 60	1995	Ford 4 X 4 F350	Talbot Station 640
Brush 63	2017	Type 6 Brush Rig	Millersburg Station 640
Engine 64	2003	Pierce Saber	Talbot Station 640
Tender 64	1982	International 6 x 6	Talbot Station 640
Brush 64	2017	Type 6 Brush Rig	Talbot 640