

2019 Annual Report



Jefferson Rural Fire Protection District
*Jefferson * Millersburg * Talbot*



“Proudly Serving Since 1956”

Services We Provide

The Jefferson Rural Fire Protection District provides fire and emergency services for a population of approximately **9,500 people** in a rural area of the Willamette Valley. The district includes three fire stations and depends on volunteers and part-time ambulance crews to respond on emergency calls.

The Jefferson Rural Fire Protection District was formed in 1956 and covers approximately **97 square miles** that includes the City of Jefferson, rural areas of Millersburg, Talbot, and Ambulance Service Area (ASA), which includes five square miles in the Scio Fire District area. The district covers a total of 31 miles of river which includes the North and South forks of the Santiam River, and the Willamette River. There are two railroad systems and approximately 10 miles of Interstate 5. The district lay is diverse in the sense that there are rural areas in Jefferson. Many houses and subdivisions located in the more rural areas are nestled in heavily wooded hillsides and steep terrain.

Emergency services provided include fire suppression, emergency medical services, ambulance transportation, water rescue, hazardous materials response, fire prevention, fire safety education, and health education on injury and illness prevention.

The Jefferson Fire District provides services beyond fire and EMS. We have a medical equipment loan program, a Life Jacket Loan station, Chimney Brush Loan Program, Birthday Parties at the station, First Aid/CPR Instruction, Bike Helmet Program, Notary Service, Blood Pressure Checks, Fire Prevention Programs, Smoke Detector Program, Trunk and Treat, AARP Safe Driving Classes, Babysitting Class, and Address Signs. The Jefferson Volunteer Association has programs such as two Pancake Breakfasts a year and Fill the Boot (MDA).

There are three fire stations within Jefferson Fire District including Millersburg and Talbot which are primarily staffed with volunteers. The volunteers are people of good character and are willing to go through an extensive training program in order to serve as a member of the Jefferson Fire District. People interested in volunteering should contact the Fire District office. District personnel includes the Fire Chief (part-time), Assistant Chief, Training/Maintenance Officer, Logistics Supervisor, Administrative Assistant, part-time Staff Assistant and approximately 21 Volunteer Firefighters, 14 Volunteer EMT/EMR personnel, seven Support Team members, 12 part-time Paramedics, and 11 part-time EMTs.

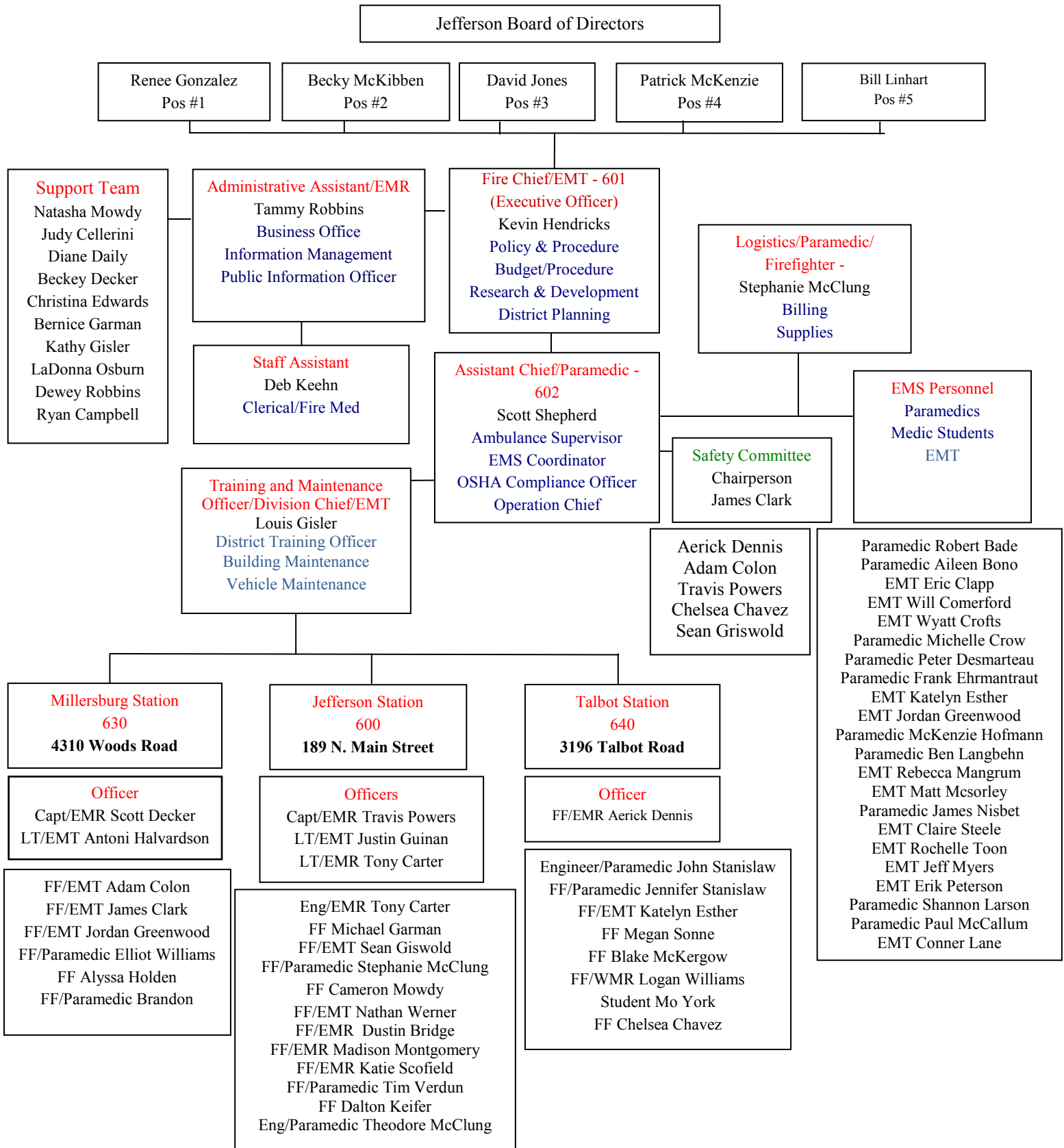
There are a total of four fire engines (that carry 1,000 gallons), one 3,000 gallon water tender and two 2,500 gallon multi-use tenders, two brush fire pick-ups, one light duty rescue, two ambulances, one rescue boat, one command unit, and one support unit.

Financial Information

An annual financial audit provides the district and the public with an accounting of the Fire District's finances. The district operates on a cash basis and the audit is based on an accrual basis. We are proud to report that the audit indicated we have no instances of noncompliance. The Budget Committee Members are as follows: Bud Jones, Eileen Vetter, Roger Frank, Vince Cellerini, and Ray Edwards. The Budget Officer is Fire Chief Kevin Hendricks.

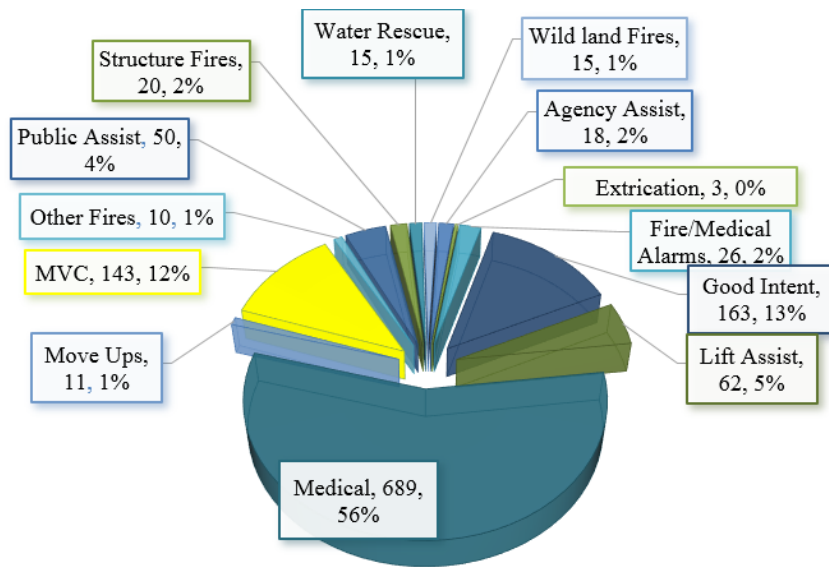
<i>Fund</i>	<i>2018-19 Budget</i>	2017-2018 Assessed Value	
<i>General Fund</i>	\$1,837,702	Marion County	\$491,600,841
<i>Equipment Reserve Fund</i>	\$173,667	Linn County	\$174,667,859
<i>Grant Fund</i>	\$267,253	Total Property Value	\$666,268,730
<i>TOTAL REGULAR BUDGET</i>	\$2,278,622	<i>Permanent Tax Rate: \$1.1955 per thousand</i>	

Organizational Chart

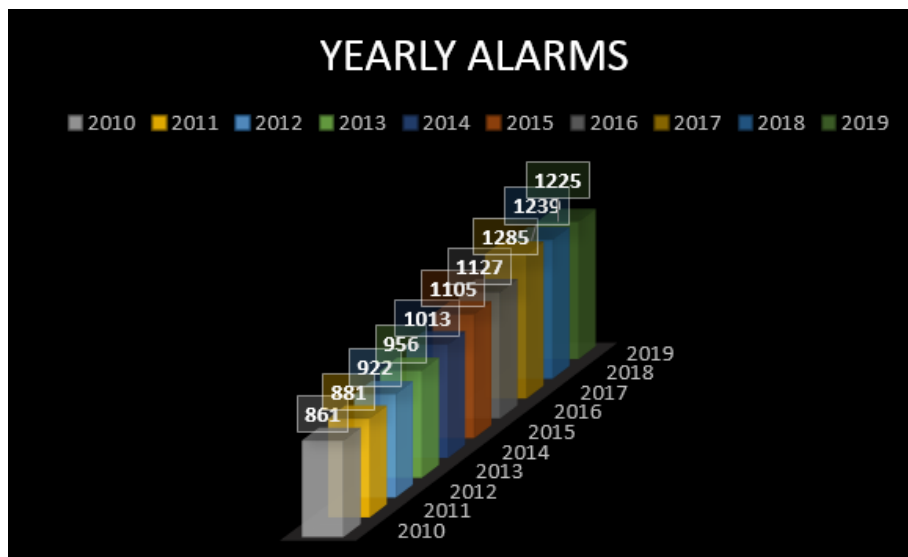


Stats

The Jefferson Fire District responded to a total of 1,225 calls for service in 2019. These consisted of fires, medical emergencies, water rescues, motor-vehicle crashes, etc. The district's population has grown, increasing our customer base.

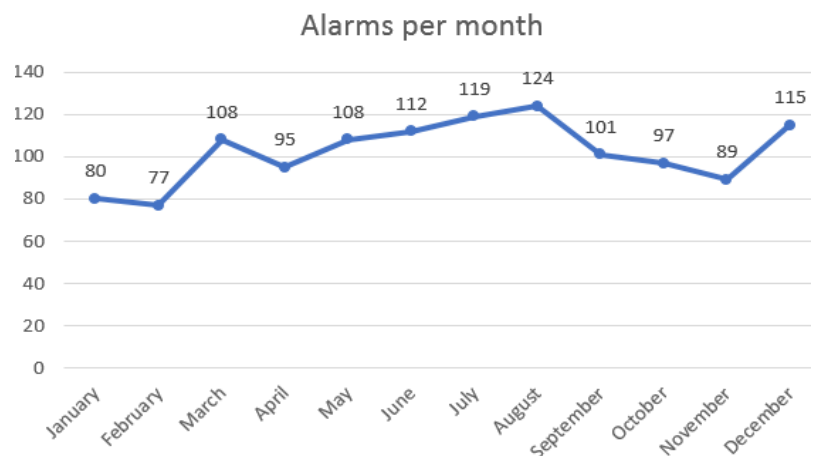


Most responses 689 (56%) are for medical emergencies. The district was called to 20 (2%) structure fires during 2019.



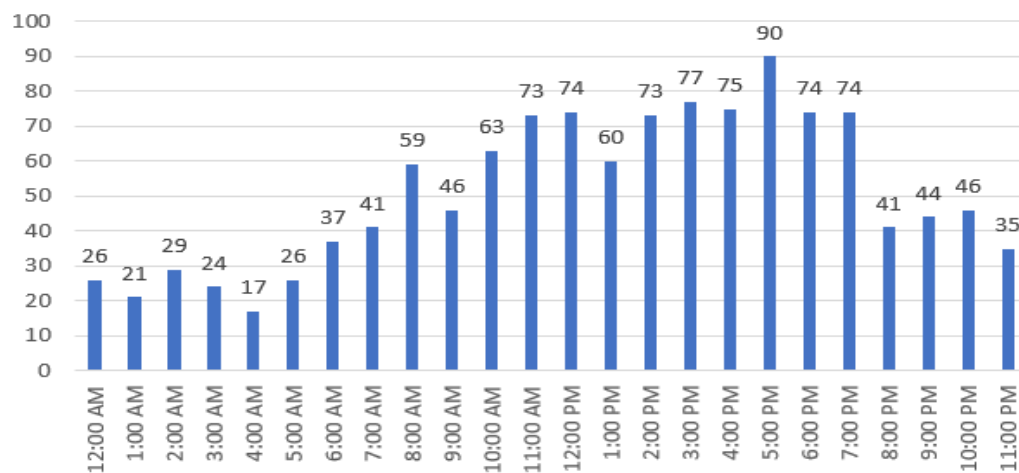
Since 2010 the district has been on a steady increase for calls for service.

Emergency responses vary by month. Summer months are busier due to wildland fires and recreational activities. Winter months bring more incidents involving heating equipment and poor road conditions.

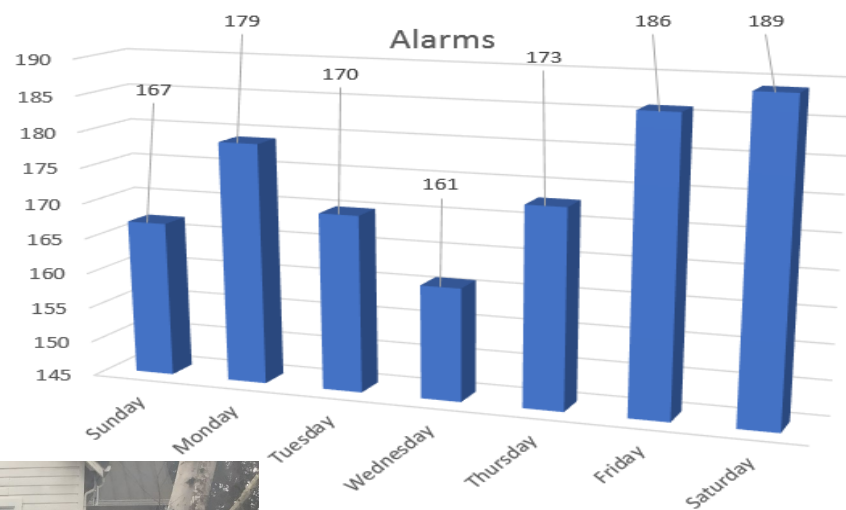


Stats Continued

Alarms by Hour



Most emergencies occur on Friday and Saturday. The busiest period of the day for emergencies is 11:00 a.m. to 7:00 p.m.



Stats Continued

Incident Type	Jan	Feb	Mar	Apr	May	June	July	Aug	Sept	Oct	Nov	Dec	Total
111 - Building fire	2	3	2	0	2	1	0	2	0	3	2	1	18
114 - Chimney or flue fire, confined to chimney or flue	1	0	0	0	0	0	0	0	0	0	0	0	1
131 - Passenger vehicle fire	0	0	0	1	1	1	1	1	0	1	0	2	8
132 - Road freight or transport vehicle fire	1	0	0	0	0	0	0	0	0	0	0	0	1
138 - Off-road vehicle or heavy equipment fire	0	0	0	0	0	0	0	0	0	0	0	0	0
141 - Forest, woods or wildland fire	0	0	1	0	0	0	0	0	0	1	0	0	2
142 - Brush or brush and grass mixture	0	0	0	0	1	1	1	2	0	0	0	0	5
143 - Grass fire	0	0	0	1	1	0	1	3	1	0	0	0	7
151 - Outside rubbish, trash or waste fire	0	0	0	1	0	0	1	0	0	0	0	0	2
162 - Outside equipment fire	0	0	0	1	0	0	0	0	0	0	0	0	1
321 - EMS call, excluding vehicle accident with injury	49	43	69	54	57	56	71	59	60	52	50	69	689
322 - Motor vehicle accident with injuries	3	2	5	3	1	6	2	10	5	5	3	4	49
323 - Motor vehicle/pedestrian accident (MV ped)	0	0	1	0	0	0	0	0	0	1	0	0	2
324 - Motor vehicle accident with no injuries.	6	9	6	8	5	11	5	9	9	8	7	9	92
341 - Search for person	0	0	0	0	0	1	0	0	0	0	0	0	1
342 - Search for person in water	0	0	0	0	0	0	0	0	0	0	0	0	0
352 - Extrications from Vehicles	0	1	0	1	0	0	0	0	0	1	0	0	3
361 - Swimming/recreational water areas rescue	0	0	0	0	0	0	0	0	0	0	0	0	0
363 - Swift water rescue	0	0	0	0	1	3	7	4	0	0	0	0	15
411 - Gasoline or other flammable liquid spill	0	0	0	0	0	2	0	0	0	0	0	0	2
412 - Gas leak (natural gas or LPG)	0	0	0	0	0	0	0	0	1	1	0	0	2
442 - Overheated	0	0	0	0	1	0	0	0	1	0	0	0	2
444 - Power line down	0	0	0	0	0	1	0	1	2	0	0	1	5
445 - Arcing, shorted electrical equipment	0	0	0	0	0	0	0	0	0	0	0	0	0
4611 - Downed Tree	0	1	0	0	0	3	0	0	0	0	0	1	5
542 - Animal Rescue	0	0	0	0	1	0	0	0	0	1	0	0	2
552 - Police matter	1	2	3	1	0	1	2	3	0	2	1	2	18
553 - Public service	1	0	0	2	0	1	2	2	2	1	1	1	13
554 - Assist invalid	3	3	5	7	8	7	5	7	4	2	3	8	62
561 - Unauthorized burning	0	2	2	0	4	1	1	0	1	0	5	1	17
571 - Cover assignment, standby, move up	1	0	0	4	0	0	4	1	0	0	0	1	11
6112 - Dispatched and cancelled en route, EMS call	3	3	6	3	8	6	2	6	3	8	2	5	55
6113 - Dispatched and cancelled en route, EMS alarm	0	0	1	0	0	0	0	1	0	0	0	0	2
6114 - Dispatched and cancelled en route, Fire call	0	1	1	2	1	0	4	0	0	0	2	1	12
6115 - Dispatched and cancelled en route, Fire alarm	0	0	0	0	2	1	1	1	0	1	0	2	8
6116 - Dispatched and cancelled en route, MVA	3	7	1	2	0	1	0	2	2	2	0	1	21
6117 - Dispatched, unable to respond	0	0	2	0	1	1	0	0	0	2	1	1	8
622 - No incident found on arrival at dispatch address	2	0	0	1	5	4	4	5	2	1	6	2	32
631 - Authorized controlled burning	0	0	0	2	4	2	1	2	2	2	0	0	15
651 - Smoke scare, odor of smoke	0	0	1	0	0	0	0	1	2	0	1	0	5
652 - Steam, vapor, fog or dust thought to be smoke	0	0	0	0	0	0	3	1	0	0	0	0	4
745 - Alarm system activation, no fire - unintentional	4	0	2	1	4	1	1	1	3	2	5	2	26
746 - Carbon monoxide detector activation, no CO	0	0	0	0	0	0	0	0	0	0	0	0	0
813 - Wind storm, tornado/hurricane assessment	0	0	0	0	0	0	0	0	1	0	0	1	2
Monthly Total	80	77	108	95	108	112	119	124	101	97	89	115	1225
Transports	38	26	48	40	43	44	53	53	45	51	37	53	531
Scio calls	10	5	6	10	7	8	12	10	16	11	9	5	109
Scio Transports	5	2	2	3	4	5	6	4	9	5	7	4	56
Mutual Aid Given	2	4	5	7	4	2	6	5	2	7	2	2	48

Station Apparatus Status

Jefferson Station

Boat 60

Number of responses	12
Average staffing per response	2.5
Average tone out to response	11:26
Average tone out to arrival	16:30
Average time unit spent on the calls	50:13



S60/Duty Officer Rig

Number of responses	461
Average staffing per response	1.13
Average tone out to response	3:01
Average tone out to arrival	9:24
Average time unit spent on the calls	19:51

Engine 60 Weekend/Night staffing

Number of responses	111
Average staffing per response	2.25
Average tone out to response	5:43
Average tone out to arrival	12:49
Average time unit spent on the calls	27:02

Engine 60 Weekday staffing

Number of Responses	271
Average staffing per response	2.9
Average tone out to response	2:27
Average tone out to arrival	8:39
Average time unit spent on the calls	25:32



Engine 61

Number of responses	15
Average staffing per response	1.8
Average tone out to response	5:30
Average tone out to arrival	14:46
Average time unit spent on the calls	42:55

Station Apparatus Status

Jefferson Station

Medic 60 Staffed 24/7

Number of Responses	999
Average staffing per response	2.06
Average tone out to response	2:37
Average tone out to arrival	10:04
Average time unit spent on the calls	48:09



M61 Volunteers/Off Duty Personnel

Number of responses	47
Average staffing per response	1.87
Average tone out to response	3:28
Average tone out to arrival	9:20
Average time unit spent on the calls	28:43



Rescue 60

Number of responses	235
Average staffing per response	1.3
Average tone out to response	5:24
Average tone out to arrival	11:26
Average time unit spent on the calls	22:26



Support 61

Number of responses	235
Average staffing per response	1.12
Average tone out to response	6:39
Average tone out to arrival	15:25
Average time unit spent on the calls	52:49



Tender 60

Number of responses	23
Average staffing per response	1.13
Average tone out to response	5:29
Average tone out to arrival	16:02
Average time unit spent on the calls/	7:28:33
Extended Mutual Aid Alarm	

Station Apparatus Status

Jefferson Station

Utility 60

Number of responses	33
Average staffing per response	1.30
Average tone out to response	3:55
Average tone out to arrival	10:56
Average time unit spent on the calls	42:47



Millersburg Station



Brush 63

Number of responses	356
Average staffing per response	1.27
Average tone out to response	3:35
Average tone out to arrival	13:00
Average time unit spent on the calls	20:45

Engine 63

Number of responses	84
Average staffing per response	1.85
Average tone out to response	3:32
Average tone out to arrival	12:18
Average time unit spent on the calls	27:17



Station Apparatus Status

Talbot Station



Brush 64

Number of Responses	354
Average staffing per response	1.87
Average tone out to response	3:31
Average tone out to arrival	11:58
Average time unit spent on the calls	27:03

Engine 64

Number of Responses	40
Average staffing per response	2.45
Average tone out to response	6:05
Average tone out to arrival	13:04
Average time unit spent on the calls	27:51



Tender 64

Number of responses	0
Average staffing per response	0
Average tone out to response	0
Average tone out to arrival	0
Average time unit spent on the calls	0



School/Tours/ Public Education



Life Saver Awards



Public Education/Kurt Schrader Visit



2019 Annual Awards Banquet



Fire, Rescue, and EMS Training



Service Calls



Emergency Medical Services

The Jefferson Fire District provides medical transport services to both Linn and Marion Counties within the 97 square miles of district boundaries and about five square miles in the Scio Fire District. Assistant Chief Scott Shepherd is responsible for managing the ambulance service. Stephanie McClung oversees billing, equipment repair, and supplies for the ambulance service and training.

The Emergency Medical Division is the busiest division of the district handling about 60% of the incidents (including MVCs). To provide the service, the district uses one full-time paramedic, as well as part-time paramedics and part-time EMTs to cover the first out medic unit 24 hours a day, seven days a week. The second out medic is covered by full-time and volunteer paramedics and EMTs when available. The district has mutual aid agreements with neighboring ambulance services when our units are not available. Firefighters are trained to the EMR level or higher to provide care in conjunction with the medic crew or as first response when the medic unit is delayed. The medic units are also assigned to other incident types to provide manpower and/or oversee the health of the firefighters working.



Life Flight is a membership program that is now being offered along with FireMed. Life Flight will be taking over our member services program. Fees will stay the same for ground ambulance, however other fees will apply if air ambulance is necessary as well. New brochures and website is available to access April 2020. Any questions regarding FireMed can be referred to 1-800-982-9299.

Equipment and Maintenance

<i>Apparatus</i>	<i>Year</i>	<i>Make</i>	<i>Located</i>
Support 60	2002	Chevy Suburban	Jefferson Station 600
Utility 60	1996	Dodge 4 x 4	Jefferson Station 600
Medic 60	2008	Ambulance	Jefferson Station 600
Medic 61	2004	Ambulance	Jefferson Station 600
Support 61	1991	Chevy Suburban	Jefferson Station 600
Tender 60	1992	IH H&W 3,000 Gallon Tender	Jefferson Station 600
Engine 60	2003	Pierce Saber	Jefferson Station 600
Engine 61	1991	IH Western States Pumper	Jefferson Station 600
Boat 60	2015	Rescue Boat - 21' SJX	Jefferson Station 600
Rescue 60	2001	Ford F-550	Millersburg Station 600
Engine 63	2003	Pierce Saber	Millersburg Station 630
Brush 63	2017	Type 6 Brush Rig	Millersburg Station 630
Engine 64	2003	Pierce Saber	Talbot Station 640
Tender 64	1982	International 6 x 6	Talbot Station 640
Brush 64	2017	Type 6 Brush Rig	Talbot 640