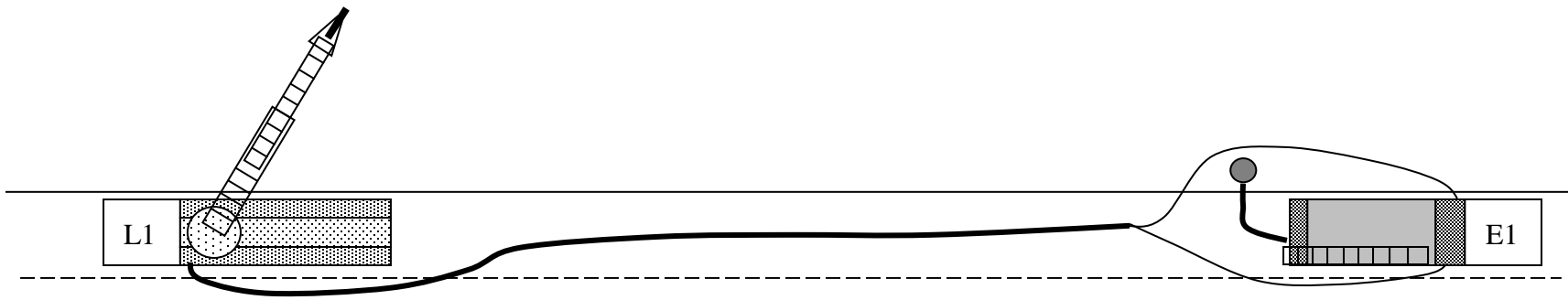


JFD Standard Evolution 9

Single Engine Reverse Lay from Ladder Company



L1 establish an elevated master stream
E1 stops at the site of the Ladder and remove needed equipment from the engine
E1 reverse 5" LDH to the hydrant
E1 establishes a water supply to the ladder
NOTE: AO needs to know if the aerial has a pump which will dictate the pressure required at E1
AO is the only person who returns with the engine

Target Times
2-person crew 5 minutes